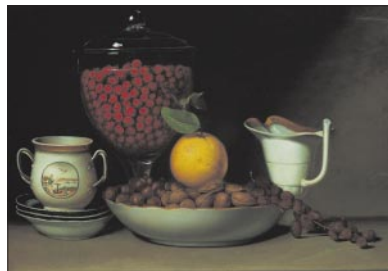


JAMA

The Journal of the American Medical Association



Raphaelle Peale (1774-1825), *Still Life—Strawberries, Nuts, & c.*, 1822, American.

Letters

Lifestyle and Structured Interventions to Increase Physical Activity 1515

P. T. WILLIAMS; R. A. WINETT, R. N. CARPINELLI; G. D. SMITH, S. EBRAHIM; A. L. DUNN, S. N. BLAIR, J. B. KAMPERT, B. H. MARCUS, M. E. GARCIA, H. W. KOHL III; R. ANDERSEN; M. PRATT

Research Letter 1517

CSF Leptin Levels After Exogenous Administration of Recombinant Methionyl Human Leptin

K. FUJIOKA, J. PATANE, J. LUBINA, D. LAU

October 27, 1999

ORIGINAL CONTRIBUTIONS

The Spread of the Obesity Epidemic in the United States, 1991-1998 1519

A. H. MOKDAD, M. K. SERDULA, W. H. DIETZ, B. A. BOWMAN, J. S. MARKS, J. P. KOPLAN

The Disease Burden Associated With Overweight and Obesity 1523

A. MUST, J. SPADANO, E. H. COAKLEY, A. E. FIELD, G. COLDITZ, W. H. DIETZ

Annual Deaths Attributable to Obesity in the United States 1530

D. B. ALLISON, K. R. FONTAINE, J. E. MANSON, J. STEVENS, T. B. VANITALLIE

Dietary Fiber, Weight Gain, and Cardiovascular Disease Risk Factors in Young Adults 1539

D. S. LUDWIG, M. A. PEREIRA, C. H. KROENKE, J. E. HILNER, L. VAN HORN, M. L. SLATTERY, D. R. JACOBS, JR

Relationship Between Low Cardiorespiratory Fitness and Mortality in Normal-Weight, Overweight, and Obese Men 1547

M. WEI, J. B. KAMPERT, C. E. BARLOW, M. Z. NICHAMAN, L. W. GIBBONS, R. S. PAFFENBARGER, JR, S. N. BLAIR

Effects of Intermittent Exercise and Use of Home Exercise Equipment on Adherence, Weight Loss, and Fitness in Overweight Women: A Randomized Trial 1554

J. M. JAKICIC, C. WINTERS, W. LANG, R. R. WING

Reducing Children's Television Viewing to Prevent Obesity: A Randomized Controlled Trial 1561

T. N. ROBINSON

PRELIMINARY COMMUNICATION

Recombinant Leptin for Weight Loss in Obese and Lean Adults: A Randomized, Controlled, Dose-Escalation Trial 1568

S. B. HEYMSFIELD, A. S. GREENBERG, K. FUJIOKA, R. M. DIXON, R. KUSHNER, T. HUNT, J. A. LUBINA, J. PATANE, B. SELF, P. HUNT, M. MCCAMISH

BRIEF REPORT

Are Health Care Professionals Advising Obese Patients to Lose Weight? 1576

D. A. GALUSKA, J. C. WILL, M. K. SERDULA, E. S. FORD

EDITORIALS

Caloric Imbalance and Public Health Policy 1579

J. P. KOPLAN, W. H. DIETZ

Patients, Physicians, and Weight Control 1581

P. B. FONTANAROSA

116 Years of CONTINUOUS PUBLICATION

INTERIM COEDITORS
Richard M. Glass, MD
Phil B. Fontanarosa, MD

JAMA

Humanities

THE COVER 1502

Still Life—Strawberries, Nuts, & c.

M. T. SOUTHGATE

POETRY AND MEDICINE 1502 *k*

In Remission

F. SKLOOT

JAMA 100 YEARS AGO 1502 *l*

National Expansion

“Pure Foods”

Physical Development in America

Reader Service

This Week in JAMA 1497

Masthead 1498

The Key and Critical Objectives of JAMA 1501

Abstracts 1506 *c*

Archives Journals Abstracts 1506 *l*

Obituary Listing 1592 *b*

Continuing Medical Education JAMA Reader's Choice 1593

Classified Advertising and Announcements 1594 *c*

Index of Advertisers 1595

Subscription, Business, and Contact Information 1595

Reference Directories

Meetings in the United States and International Meetings October 13, 1999

Organizations of Medical Interest and State Medical Associations and Examinations and Licensure July 28, 1999

JAMA Instructions for Authors

JULY 7, 1999

All articles published, including editorials, letters, and book reviews, represent the opinions of the authors and do not reflect the official policy of the American Medical Association or the institution with which the author is affiliated, unless this is clearly specified.

CONTEMPO 1999

Recent Advances in Basic Obesity Research 1504

J. A. YANOVSKI, S. Z. YANOVSKI

THE PATIENT-PHYSICIAN RELATIONSHIP

Physician Counseling About Exercise 1583

C. C. WEE, E. P. MCCARTHY, R. B. DAVIS, R. S. PHILLIPS

BOOKS, JOURNALS, NEW MEDIA 1589

Health, Civilization and the State:

A History of Public Health From Ancient to Modern Times (Porter)

REVIEWED BY P. M. GAHLINGER

Publishing and Presenting Clinical Research (Browner)

REVIEWED BY L. A. RIESENBERG AND D. RIESENBERG

Clinical Practice of Gastroenterology, vols 1 & 2 (Brandt, ed)

REVIEWED BY Z. M. FALCHUK

Oxford Textbook of Clinical Hepatology, vols 1 & 2 (Bircher et al, eds)

REVIEWED BY F. L. IBER

Adult Health Advisor 7.OS (DeRoin, ed)

REVIEWED BY K. I. JANTUNEN

Books, Journals, New Media Received

RESIDENT PHYSICIAN FORUM

Teaching Hospitals in Trouble: Defining the Problem 1592 *a*

P. BARACH

JAMA PATIENT PAGE

Weight Management 1596

News and Analysis

MEDICAL NEWS & PERSPECTIVES 1507

Knockout Science: Chubby Mice Provide New Insights Into Obesity

Genetically Enhanced Rice to Help Fight Malnutrition

Better Control Coming for Clotting and Bleeding

QUICK UPTAKES 1511

Danger of Diabetes

Sickle Cell Pain Control

Asthma Overlooked in Elderly

Breaking Bad News

FROM THE CENTERS FOR DISEASE CONTROL AND PREVENTION 1512

Mortality Patterns—United States, 1997

Inadvertent Use of Bicillin C-R for Treatment of Syphilis—Maryland, 1998

JAMA

EDITORIAL STAFF

INTERIM COEDITORS

Richard M. Glass, MD

Phil B. Fontanarosa, MD

Deputy Editor (West): Drummond Rennie, MD

Deputy Editor: Margaret A. Winker, MD

Senior Contributing Editor: M. Therese Southgate, MD

Managing Senior Editor: Annette Flanagin

Contributing Editors: Charles B. Clayman, MD, Helene M. Cole, MD, Thomas B. Cole, MD, MPH, David S. Cooper, MD, Thomas C. Jefferson, MD, David H. Mark, MD, MPH, Harriet S. Meyer, MD, Carin M. Olson, MD, Jeanette M. Smith, MD, Jody W. Zylke, MD

Consulting Editors: Robert A. Clark, MD, Deborah J. Cook, MD

Statistical Editor: Naomi Vaisrub, PhD

Associate Editors: Charlene Breedlove, Roxanne K. Young

Fishbein Fellow: Stephen Lurie, MD, PhD

Medical News & Perspectives: Marsha F. Goldsmith (editor); Charles Marwick, Mary Jane Friedrich, Mike Mitka, Joan Stephenson, PhD (associate editors); Rebecca Voelker (contributing editor)

Assistant Editor: Juliana M. Walker

Staff Assistant: Helga Fritz

Editorial Graphics: Ronna Henry Siegel, MD (director); Jill Ghormley (medical illustrator)

Electronic Media: Marty Suter (director); Neal Shankman, Wendi Williams (assistant editors); Brande Martin (Web copy editor); Marla A. Hall (staff assistant)

MSJAMA: Jonathan H. Lin, PhD, Sue Sun Yom (editors)

Editorial Systems and Administration: Elaine Williams (director); Lenette Gardner-Gullens (electronic input supervisor); Fanny L. Brown, Celina Canchola (electronic input specialists)

Editorial Assistants: Linda Baker, Patricia Joworski, Gale Saulsberry (group supervisors); Kemberly Evans (letters coordinator); Mary Cannon, Susan Collister, Audrey Forman, Shirley Gogins, Charisse Green, Gwenn Gregg, Lisa Hardin, Carmina Landeros, Mary Ann Lilly, Ethel Pinkston, Jennifer Reiling, Raul Serrato, Nadine Siewnarine, Gloria Tate

Editorial Processing Division: Cheryl Iverson (director); Paul Frank (electronic editing specialist); Monica Mungle (assistant electronic editing specialist)

Copyediting: Stacy L. Christiansen (director); Joy K. Jaeger (abstracts editor); Coleen Adamson, Susan R. Benner (senior copy editors); Diane Howard, Marie Reinke, Beverly Stewart

PUBLISHING AND BUSINESS STAFF

VICE PRESIDENT, PUBLISHING

Robert L. Kennett

PUBLISHER

Peter J. Murphy

Production and Distribution Division: Vanessa Hayden (director), Diane Darnell (publishing manufacturing analyst), Bonnie Van Cleven (manager, budgets and costs), Karen Adams-Taylor (director, advertising and production), Linda Knott (director, electronic production), Paul Gasielki (manager, distribution), Debbie Camp, Betty Frigerio (production services supervisors), Terri Hanley (production specialist)

Managers: Phil Arko (composition), Mary Ellen Johnston (database and new media), Teresa Omiotek (proofreading), Carole Piszker (advertising), Susan Price (print production), Charl Richey (color and graphics)

Proofreaders: David Antos, Daniel James, Rachel Novickas, Mary Kay Tinerella, Barbara Wojtowicz

Production Associates and Specialists: Joseph Amft, Gail Barrett, Paul Boscoe, Joel Brammeier, Karen Branham, Regina Brownlee, Victoria Buckner, Noel Chaparro, Brenda Chandler-Grayer, Heather Crego, La'son J. Diggs, Mary Anne Donley, Karl Elvin, Shannon Epplett, Amy Evers, Kathy Gaydar, Mari Guizzetti, Carolyn Hall, Maria Kowalkowski, Mary Ann Kuranda, Sandra Lopez, Anne McBride, Christopher Meyer, Melanie Parenti, Sarah Powell, Michelle Robinson, Angela Smits, Denise Steinhäuser, Jo Anne Turner, JoAnne Weiskopf, Amelia Zamudio

Production Assistants: Bryan Irzyk, Ruth Sprague

Circulation and Content Marketing Staff:

James A. Skowrenski (director)

Circulation Processing: Beverly Martin (director); Susan Stoken, Alfred Tomaselli (managers); Reginald Jordan, Kathryn Osten (specialists)

Circulation Development: Bina Oza (director); Robert Herling, Audrey Mathies, Timothy Ryan (managers); Sandra Garzon, Michael McGraw (specialists)

Licensing and Permissions: Norman Frankel (director); Rhonda Bailey (permissions)

Subscriber Services: (800) 262-2350; fax: (312) 464-2402; e-mail: ama-subs@ama-assn.org

Advertising Sales Staff:

Stuart H. Williams (director)

Eastern: Susan J. Carollo, Alice H. Herman (representatives); 119 Cherry Hill Rd, Third Floor, Parsippany, NJ 07054, (973) 263-9191

Midwest/Farwest: Jeffery J. Bonistalli (representative); 515 N State St, Chicago, IL 60610, (312) 464-2551

Classified Advertising: Crystal Wells (representative); 515 N State St, Chicago, IL 60610, (312) 464-2456

Marketing Services Manager: Kathleen Hiltz

AMA CHIEF EXECUTIVES, OFFICERS, AND TRUSTEES

AMA EXECUTIVE STAFF

Executive Vice President, Chief Executive Officer: E. Ratcliffe Anderson, Jr, MD

Chief Operating Officer: Lynn E. Jensen, PhD

Senior Vice President, Publishing and Business Services: Robert A. Musacchio, PhD

AMA OFFICERS AND TRUSTEES

President: Thomas R. Reardon, MD*

President-Elect: Randolph D. Smoak, Jr, MD*

Immediate Past President: Nancy W. Dickey, MD*

Secretary-Treasurer: Yank D. Coble, MD*

Speaker, House of Delegates: Richard F. Corlin, MD

Vice-Speaker, House of Delegates: John A. Knote, MD

Trustees: Herman I. Abromowitz, MD; Susan Hershberg Adelman, MD; Duane M. Cady, MD; Yank D. Coble, MD*; Timothy T. Flaherty, MD* (Vice Chair); J. Edward Hill, MD; Matthew D. Kagan (Student); D. Ted Lewers, MD* (Chair); William H. Mahood, MD; John C. Nelson, MD*; Donald J. Palmisano, MD*; William G. Plested, MD; Liana Puscas, MD (Resident); Joseph A. Riggs, MD; Bruce A. Scott, MD

*Executive Committee

EDITORIAL BOARD

Daniel M. Albert, MD

University of Wisconsin Hospital and Clinics
Madison, Wis

Kenneth A. Arndt, MD

Harvard Medical School
Boston, Mass

H. David Banta, MD

The Netherlands Organization
for Applied Scientific Research
Leiden, the Netherlands

Jack D. Barchas, MD

Cornell University Medical College
New York, NY

Michael Berger, MD

Heinrich Heine Universität Düsseldorf
Düsseldorf, Germany

Robert J. Blendon, ScD

Harvard University
Boston, Mass

Marjorie A. Bowman, MD, MPA

University of Pennsylvania Health System
Philadelphia, Pa

James E. Dalen, MD

University of Arizona College of Medicine
Tucson, Ariz

Catherine D. DeAngelis, MD

Johns Hopkins University
School of Medicine, Baltimore, Md

Lois DeBakey, PhD

Baylor College of Medicine
Houston, Tex

Ronald G. Evens, MD

Washington University
School of Medicine
St Louis, Mo

Michael E. Johns, MD

Robert W. Woodruff Health Sciences
Center of Emory University
Atlanta, Ga

Colin I. Johnston, MB, BS

University of Melbourne
Melbourne, Australia

Wayne F. Larrabee, Jr, MD

University of Washington
Seattle, Wash

Hervé Maisonneuve, MD

Agence Nationale d'Accreditation et
d'Evaluation en Santé
Paris, France

Kenneth D. McClatchey, MD, DDS

Loyola University Medical Center
Maywood, Ill

C. David Naylor, MD, DPhil

University of Toronto
Toronto, Ontario, Canada

Claude H. Organ, Jr, MD

University of California—Davis, East Bay
Oakland, Calif

Edmund D. Pellegrino, MD

Georgetown University
School of Medicine
Washington, DC

Reed E. Pyeritz, MD, PhD

MCP Hahnemann University
Pittsburgh, Pa

Uwe E. Reinhardt, PhD

Princeton University, Princeton, NJ

Povl Riis, MD, DSCI, DHC

Professor of Medicine
Copenhagen, Denmark

William L. Roper, MD, MPH

University of North Carolina at Chapel Hill
Chapel Hill, NC

Roger N. Rosenberg, MD

University of Texas
Southwestern Medical Center
Dallas, Tex

Renée Solomon, MD

Mount Sinai—NYU Medical Center
New York, NY

Masaaki Terada, MD

National Cancer Center
Tokyo, Japan

INTERNATIONAL ADVISORY COMMITTEE

Bassel Atallah, MD, JAMA—Middle East

Mauro Bologna, MD, JAMA—Italy

Romuald Debski, MD, PhD, JAMA—Poland

Carlos R. Gherardi, MD, JAMA—Argentina

Carla Gikovate, MD, JAMA—Brazil

Yuichiro Goto, MD, JAMA—Japan

Evin Kantemir, MD, JAMA—Turkey

A. J. Khan, SI, FRCP, JAMA—Pakistan

Jin-Pok Kim, MD, JAMA—Korea

C. R. Kumana, MBBS, JAMA—Southeast Asia

Li Chengyi, MD, JAMA—China

Alexandra Livaditou, MD, JAMA—Greece

Ivan Vidmar, MD, JAMA—Slovenia

Miquel Vilardell-Tarres, MD, JAMA—Spain

Jiří Widimský, MUDr, DrSc, JAMA—Czech/Slovak

Alexei Yurenev, MD, JAMA—Russia