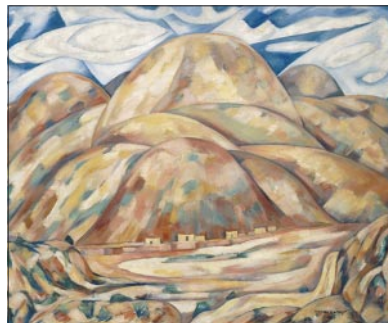


JAMA

The Journal of the American Medical Association



Marsden Hartley (1877-1943),
Landscape No. 3, 1920, American.

Letters

Statin Drugs and the Risk of Fracture 1921

A. EL-SOHEMY, T. R. PEDERSEN,
J. KJEKSHUS; C. R. MEIER,
R. G. SCHLIENGER, M. E. KRAENZLIN,
B. SCHLEGEL, H. JICK

Problems in Pharmacoeconomic Analyses

M. STAFFORD; A. MESSORI,
S. TRIPPOLI, P. D'EALESSANDRO,
D. DI GIORGIO, F. TOSOLINI;
S. HILL, D. HENRY, A. MITCHELL;
D. RENNIE, H. S. LUFT

Clinical Diagnosis of Carpal Tunnel Syndrome

S. E. MACKINNON, C. B. NOVAK,
W. M. LANDAU; R. F. LEBLOND;
C. A. D'ARCY, S. MCGEE

Outcomes of Anurod in Acute Ischemic Stroke

D. ORBACH, D. LEVINE;
J.-M. ORGOGOZO, M. VERSTRAETE,
R. KAY, M. HENNERICI, G.-L. LENZI;
D. G. SHERMAN, D. E. LEVY

117 Years of
CONTINUOUS
PUBLICATION

EDITOR
Catherine D. DeAngelis, MD, MPH

www.jama.com

October 18, 2000

ORIGINAL CONTRIBUTIONS

Pramipexole vs Levodopa as Initial Treatment for Parkinson Disease: A Randomized Controlled Trial 1931

PARKINSON STUDY GROUP

Regional Brain Volume Abnormalities and Long-term Cognitive Outcome in Preterm Infants 1939

B. S. PETERSON, B. VOHR, L. H. STAIB, C. J. CANNISTRACI, A. DOLBERG,
K. C. SCHNEIDER, K. H. KATZ, M. WESTERVELD, S. SPARROW, A. W. ANDERSON,
C. C. DUNCAN, R. W. MAKUCH, J. C. GORE, L. R. MENT

Vaginal Misoprostol Administered 1, 2, or 3 Days After Mifepristone for Early Medical Abortion: A Randomized Trial 1948

E. A. SCHAFF, S. L. FIELDING, C. WESTHOFF, C. ELLERTSON,
S. H. EISINGER, L. S. STADALIUS, L. FULLER

Cost-effectiveness of Screening for Colorectal Cancer in the General Population 1954

A. L. FRAZIER, G. A. COLDITZ, C. S. FUCHS, K. M. KUNTZ

BRIEF REPORT

Use of the Web for Medical Information by a Gastroenterology Clinic Population 1962

J. B. O'CONNOR, J. F. JOHANSON

HEALTH LAW AND ETHICS

A Proposed National Policy on Health Care Workers Living With HIV/AIDS and Other Blood-Borne Pathogens 1965

L. O. GOSTIN

EDITORIALS

Dopamine Agonists in Early Therapy for Parkinson Disease: Promise and Problems 1971

C. M. TANNER

Perinatal Brain Injury in Preterm Infants and Later Neurobehavioral Function 1973

M. HACK, H. G. TAYLOR

Patient Access to Information on Clinicians Infected With Blood-Borne Pathogens 1975

N. FOST

(Reprinted) (TABLE OF CONTENTS CONTINUED ON PAGE 1889.) 1887

©2000 American Medical Association. All rights reserved.

JAMA

Humanities

THE COVER 1895

Landscape No. 3

M. T. SOUTHGATE

A PIECE OF MY MIND 1897

Five Miles From Tomorrow

S. SHAH

POETRY AND MEDICINE 1900

Coming to Terms

S. FREEMAN

JAMA 100 YEARS AGO 1901

Alleged Insanity in the Army

Reader Service

This Week in JAMA 1891

Masthead 1892

Abstracts 1902

Archives Journals Abstracts 1905

The Key and Critical Objectives of JAMA 1990

Obituary Listing 1991

Continuing Medical Education JAMA Reader's Choice 1993

Classified Advertising and Announcements 1995

Index of Advertisers 2011

Subscription, Business, and Contact Information 2011

Reference Directories

Meetings in the United States and International Meetings September 6, 2000

Organizations of Medical Interest and State Medical Associations and Examinations and Licensure August 2, 2000

JAMA Instructions for Authors

JULY 5, 2000

All articles published, including editorials, letters, and book reviews, represent the opinions of the authors and do not reflect the official policy of the American Medical Association or the institution with which the author is affiliated, unless this is clearly specified.

CONTROVERSIES

Screening Strategies for Early Detection of Lung Cancer: The Time Is Now 1977

T. L. PETTY

Routine Screening for Lung Cancer? Maybe Someday, but Not Yet 1980

P. S. FRAME

BOOKS, JOURNALS, NEW MEDIA 1985

Hunter's Diseases of Occupations (Baxter et al, eds)

REVIEWED BY J. W. ALLEN

Smearing the Queer: Medical Bias in the Health Care of Gay Men (Scarce)

REVIEWED BY D. L. KLAMEN

From Midwives to Medicine: The Birth of American Gynecology (McGregor)

REVIEWED BY C. G. BORST

StatsDirect (Buchan)

REVIEWED BY M. L. MITCHELL

Books, Journals, New Media Received

JAMA PATIENT PAGE

Parkinson Disease 2012

News and Analysis

MEDICAL NEWS & PERSPECTIVES 1909

2000 Albert Lasker Medical Research Awards

Genital Herpes Vaccine Shows Limited Promise

HEALTH AGENCIES UPDATE 1915

Promising HIV Vaccine Target

Cold Comfort

Toolbox for Drug Abuse Treatment

Colon Cancer Screening

FROM THE CENTERS FOR DISEASE CONTROL AND PREVENTION 1916

Cluster of HIV-Infected Adolescents and Young Adults—Mississippi, 1999

Fluoroquinolone Resistance in *Neisseria gonorrhoeae*, Hawaii, 1999, and Decreased Susceptibility to Azithromycin in *N. gonorrhoeae*, Missouri, 1999

State-Specific Changes in Singleton Preterm Births Among Black and White Women—United States, 1990 and 1997

2001 Symposium on Statistical Methods: Issues Associated With Complicated Designs and Data Structures

JAMA

EDITORIAL STAFF

EDITOR

Catherine D. DeAngelis, MD, MPH

Executive Deputy Editor: Phil B. Fontanarosa, MD**Deputy Editors:** Richard M. Glass, MD, Drummond Rennie, MD, Margaret A. Winker, MD**Senior Contributing Editor:** M. Therese Southgate, MD**Managing Senior Editor:** Annette Flanagan**Senior Editor:** Stephen J. Lurie, MD, PhD**Contributing Editors:** Charles B. Clayman, MD, Helene M. Cole, MD, Thomas B. Cole, MD, MPH, David S. Cooper, MD, David H. Mark, MD, MPH, Robert A. McNutt, MD, Harriet S. Meyer, MD, Carin M. Olson, MD, Jeanette M. Smith, MD, Jody W. Zylke, MD**Consulting Editors:** Robert A. Clark, MD, Deborah J. Cook, MD**Statistical Editor:** Naomi Vaisrub, PhD**Associate Editors:** Charlene Breedlove, Roxanne K. Young**Fishbein Fellow:** Alice T. D. Hughes, MD**Medical News & Perspectives:** Marsha F. Goldsmith (editor); Mike Mitka, Joan Stephenson, PhD (associate editors); Rebecca Voelker (contributing editor)**Assistant Editor:** Juliana M. Walker**MSJAMA:** Alison J. Huang, MPHil, Stefan C. Weiss, MHS (coeditors)**Assistant to the Editor:** Helga Fritz**Administrative Assistant:** Nadine Siewnarine**Editorial Graphics:** Ronna Henry Siegel, MD (director); Cassio Lynm (medical illustrator)**Electronic Media:** Michelle Kurzynski (director); Keith Huff (Web development editor); Nikhil Torsekar (assistant editor); Erin Giannini (Web copy editor); Marla A. Hall (Web office manager); Gemma Wall (editorial assistant)**Editorial Systems and Administration:** Elaine Williams (director); Gale Saulsbery (database specialist); Lenette Gardner-Gullens (electronic input supervisor); Fanny L. Brown, Celina Canchola (electronic input specialists)**Editorial Assistants:** Patricia Joworski, Gloria Tate (group supervisors); Mary Cannon, Susan Collister, Audrey Forman, Shirley Gogins, Charisse Green, Gwenn Gregg, Lisa Hardin, Carmina Landeros, Mary Ann Lilly, Lupe Morales, Ethel Pinkston, Jennifer Reiling, Cara Savage, Raul Serrato**Editorial Processing Division:** Cheryl Iverson (director); Paul Frank (electronic editing specialist); Monica Mungle (assistant electronic editing specialist)**Copyediting:** Stacy L. Christiansen (director); Joy K. Jaeger (abstracts editor); Coleen Adamson, Susan R. Benner (senior copy editors); Diane Howard, Jennifer L. Reddy, Beverly Stewart

PUBLISHING AND BUSINESS STAFF

Vice President, Publishing: Robert L. Kennett**Publisher:** Peter J. Murphy**Production and Distribution Division:****Directors:** Karen Adams-Taylor, Paul Gasiecki, Vanessa Hayden**Managers:** David Antos, Karen Branham, Debbie Camp, Diane Darnell, Karl Elvin, Betty Frigerio, Terri Hanley, Mary Ellen Johnston, Carole Piszker, Susan Price, Charl Richey, Carmela Ware**Production Assistant:** Kristy Kambanis, Ruth Sprague**Production Associates and Specialists****Advertising and Production Services:** Susan Chiara, Mary Anne Donley, Sarah Powell, Denise Steinhauser, Jo Anne Turner, Ellen Yoshihara**Composition:** Rebecca Aiken, Brenda Chandler-Grayer, Amy Evers, Fred Furtner, Mary Ann Kuranda, Sandra Lopez**Database & New Media:** Bruce McGregor (indexer), Clifford O. Barrett, Gail Barrett, Joel Brammeier, Regina Brownlee, La'son J. Diggs, Angela Smits**Distribution:** Michelle Robinson**Graphics:** Joe Amft, Noel Chaparro, Carolyn Hall, Maria Kowalkowski, Chris Meyer, JoAnne Weiskopf**Proofreading:** Daniel James, Teresa H. Omiolek, Mary Kay Tinerella, Barbara Wojtowicz, Agnes A. Zarkadas**Circulation Processing:** Robert Herling (director); Susan Stoken, Alfred Tomaselli (managers); Reginald Jordan, Kathryn Osten (specialists)**Circulation Development:** Bina Oza (director); Vida Damijonaitis, Donna Goldman, Michael McGraw (managers); Sandra Garzon (specialist)**Licensing and Permissions:** Norman Frankel (director); Rhonda Bailey (permissions)**Subscriber Services:** (800) 262-2350; fax: (312) 464-5831; e-mail: ama-subs@ama-assn.org**Advertising Sales Staff:** Stuart H. Williams (director)**Eastern:** Susan J. Carollo, Alice H. Herman (representatives); 119 Cherry Hill Rd, Third Floor, Parsippany, NJ 07054, (973) 263-9191**Midwest/Farwest:** Jeffery J. Bonistalli (representative); 515 N State St, Chicago, IL 60610, (312) 464-2551**Classified Advertising:** Crystal Wells (representative); 515 N State St, Chicago, IL 60610, (312) 464-2456**Marketing Services Manager:** Kathleen Hiltz

AMA EXECUTIVES AND TRUSTEES

Executive Vice President, Chief Executive Officer: E. Ratcliffe Anderson, Jr, MD**Senior Vice President, Publishing and Business Services:** Robert A. Musacchio, PhD**President:** Randolph D. Smoak, Jr, MD**President-Elect:** Richard F. Corlin, MD**Immediate Past President:** Thomas R. Reardon, MD**Speaker, House of Delegates:** John A. Knote, MD**Vice-Speaker, House of Delegates:** Nancy H. Nielsen, MD**Trustees:** D. Ted Lewers, MD (chair); Timothy T. Flaherty, MD (chair-elect); Yank D. Coble, Jr, MD (secretary-treasurer); Herman I. Abramowitz, MD; Susan Hersberg Adelman, MD; Duane M. Cady, MD; J. Edward Hill, MD; William H. Mahood, MD; Sandeep "Sunny" Mistry (student); John C. Nelson, MD; Donald J. Palmisano, MD; William G. Plested, MD; Liana Puscas, MD (resident); Joseph A. Riggs, MD; Bruce A. Scott, MD (young physician)

JOURNAL OVERSIGHT COMMITTEE

Joshua Lederberg, PhD (chair), Christine K. Cassel, MD, David A. Kessler, MD, JD, Robert A. Musacchio, PhD, William M. Passano, Jr, Roy M. Pitkin, MD, Kenneth I. Shine, MD

EDITORIAL BOARD

Daniel M. Albert, MD
University of Wisconsin Hospital and Clinics
Madison, Wis**Kenneth A. Arndt, MD**
Harvard Medical School
Boston, Mass**H. David Banta, MD**
The Netherlands Organization
for Applied Scientific Research
Leiden, the Netherlands**Jack D. Barchas, MD**
Cornell University Medical College
New York, NY**Michael Berger, MD**
Heinrich Heine Universität Düsseldorf
Düsseldorf, Germany**Robert J. Blendon, ScD**
Harvard University
Boston, Mass**Marjorie A. Bowman, MD, MPA**
University of Pennsylvania Health System
Philadelphia, Pa**James E. Dalen, MD**
University of Arizona College of Medicine
Tucson, Ariz**Lois DeBakey, PhD**
Baylor College of Medicine
Houston, Tex**Pierre Durieux, MD, MPH**
Université Paris 6
Paris, France**Ronald G. Evens, MD**
Washington University School of Medicine
St Louis, Mo**Michael E. Johns, MD**
Robert W. Woodruff Health Sciences
Center of Emory University
Atlanta, Ga**Colin I. Johnston, MB, BS**
University of Melbourne
Melbourne, Australia**Wayne F. Larrabee, Jr, MD**
University of Washington
Seattle, Wash**Joseph K. Lim, MD**
Yale University School of Medicine
New Haven, Conn**Donald A. B. Lindberg, MD**
National Library of Medicine
Bethesda, Md**Kenneth D. McClatchey, MD, DDS**
Loyola University Medical Center
Maywood, Ill**C. David Naylor, MD, DPHl**
University of Toronto
Toronto, Ontario, Canada**Claude H. Organ, Jr, MD**
University of California-Davis, East Bay
Oakland, Calif**Edmund D. Pellegrino, MD**
Georgetown University
Washington, DC**Reed E. Pyeritz, MD, PhD**
MCP Hahnemann University
Pittsburgh, Pa**Uwe E. Reinhardt, PhD**
Princeton University, Princeton, NJ**Povl Riis, MD, DSCI, DHC**
Professor of Medicine
Copenhagen, Denmark**Frederick P. Rivara, MD, MPH**
University of Washington
Seattle, Wash**William L. Roper, MD, MPH**
University of North Carolina at Chapel Hill
Chapel Hill, NC**Roger N. Rosenberg, MD**
University of Texas
Southwestern Medical Center
Dallas, Tex**Masaaki Terada, MD**
National Cancer Center
Tokyo, Japan

INTERNATIONAL ADVISORY COMMITTEE

Bassel Atallah, MD, JAMA—Middle East
Mauro Bologna, MD, JAMA—Italy
Namsik Chung, MD, PhD, JAMA—Korea
Romuald Debski, MD, PhD, JAMA—Poland
Csaba Farsang, MD, DSc, JAMA—Hungary
Evarist Feliu Frasnado, MD, JAMA—Spain
Carlos R. Gherardi, MD, JAMA—Argentina
Carla Gikovate, MD, MSc, JAMA—Brazil
Hiromasa Ishii, MD, JAMA—Japan
Evin Kantemir, MD, JAMA—Turkey
A. J. Khan, SI, FRCP, JAMA—Pakistan
C. R. Kumana, MBBS, JAMA—Southeast Asia
Li Chengyi, MD, JAMA—China
Alexandra Livaditou, MD, JAMA—Greece
Victor Hugo Olmedo Canchola, MD, JAMA—Mexico
Ivan Vidmar, MD, JAMA—Slovenia
Jiří Widimský, MUDr, DrSc, JAMA—Czech/Slovak
Alexei Yurenev, MD, JAMA—Russia