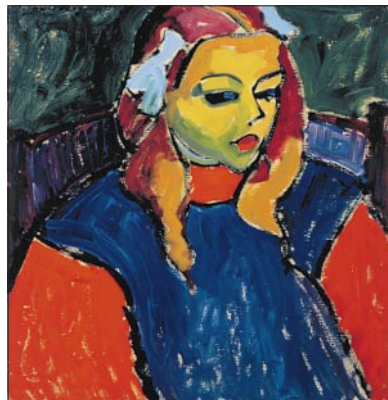


JAMA

The Journal of the American Medical Association



Alexei von Jawlensky, *Girl With the Green Face*, 1910, Russian.

March 14, 2001

ORIGINAL CONTRIBUTIONS

- Continuation Pharmacotherapy in the Prevention of Relapse Following Electroconvulsive Therapy: A Randomized Controlled Trial 1299
 H. A. SACKEIM, R. F. HASKETT, B. H. MULSANT, M. E. THASE, J. J. MANN, H. M. PETTINATI, R. M. GREENBERG, R. R. CROWE, T. B. COOPER, J. PRUDIC
- Survival After AIDS Diagnosis in Adolescents and Adults During the Treatment Era, United States, 1984-1997 1308
 L. M. LEE, J. M. KARON, R. SELIK, J. J. NEAL, P. L. FLEMING

CLINICAL INVESTIGATIONS

- Acute Respiratory Tract Infections and Mannose-Binding Lectin Insufficiency During Early Childhood 1316
 A. KOCH, M. MELBYE, P. SORENSEN, P. HOMOE, H. O. MADSEN, K. MOLBAK, C. H. HANSEN, L. H. ANDERSEN, G. W. HAHN, P. GARRED
- Drug-Induced QT Prolongation in Women During the Menstrual Cycle 1322
 I. RODRIGUEZ, M. J. KILBORN, X.-K. LIU, J. C. PEZZULLO, R. L. WOOSLEY

BRIEF REPORT

- Histamine Poisoning Associated With Eating Tuna Burgers 1327
 K. BECKER, K. SOUTHWICK, J. REARDON, R. BERG, J. N. MACCORMACK

PERSPECTIVES ON CARE AT THE CLOSE OF LIFE

- Management of Dyspnea in Patients With Far-Advanced Lung Disease: "Once I Lose It, It's Kind of Hard to Catch It . . ." 1331
 J. M. LUCE, J. A. LUCE

REVIEW

- Magnetic Resonance Angiography for the Evaluation of Lower Extremity Arterial Disease: A Meta-analysis 1338
 M. J. W. KOELEMAY, J. G. LIJMER, J. STOKER, D. A. LEGEMATE, P. M. M. BOSSUYT

EDITORIALS

- Electroconvulsive Therapy: Time to Bring It Out of the Shadows 1346
 R. M. GLASS
- Why Do Some Individuals Have More Infections Than Others? 1348
 J. A. WINKELSTEIN, B. CHILDS

Letters

- Marital Stress and Coronary Heart Disease 1289
 J. MACLEOD, G. DAVEY SMITH; K. ORTH-GOMER, S. P. WAMALA
- Training in Psychiatric Consultation
 D. J. ROBINSON; M. VIEDERMAN

Research Letters 1291

- Linezolid and Reversible Myelosuppression
 S. L. GREEN, J. C. MADDOX, E. D. HUTTENBACH
- Methylmercury and Neurodevelopment: Reanalysis of the Seychelles Child Development Study Outcomes at 66 Months of Age
 P. W. DAVIDSON, J. KOST, G. J. MYERS, C. COX, T. W. CLARKSON, C. F. SHAMLAYE

117 Years of CONTINUOUS PUBLICATION
 EDITOR
 Catherine D. DeAngelis, MD, MPH

www.jama.com

(Reprinted) (TABLE OF CONTENTS CONTINUED ON PAGE 1255.) **1253**

©2001 American Medical Association. All rights reserved.

JAMA

Humanities

THE COVER 1261

Girl With the Green Face

M. T. SOUTHGATE

POETRY AND MEDICINE 1262

Migraine Nocturne

P. TATARUNIS

JAMA 100 YEARS AGO 1264

Medical News

Therapeutics

A PIECE OF MY MIND 1265

The Condition We Don't Discuss

W. H. ORSINGER

Reader Service

This Week in JAMA 1257

Masthead 1258

Abstracts 1270

Archives Journals Abstracts 1273

The Key and Critical Objectives of JAMA 1276

Correction 1293

Reference Directories

MEETINGS IN THE UNITED STATES AND INTERNATIONAL MEETINGS 1364

ORGANIZATIONS OF MEDICAL INTEREST AND STATE MEDICAL ASSOCIATIONS AND EXAMINATIONS AND LICENSURE July 26, 2000

Obituary Listing 1369

Continuing Medical Education JAMA Reader's Choice 1373

Classified Advertising and Announcements 1375

Index of Advertisers 1389

Subscription, Business, and Contact Information 1389

JAMA Instructions for Authors

JANUARY 3, 2001

All articles published, including editorials, letters, and book reviews, represent the opinions of the authors and do not reflect the official policy of the American Medical Association or the institution with which the author is affiliated, unless this is clearly specified.

www.jama.com

CONTEMPO UPDATES: LINKING EVIDENCE AND EXPERIENCE

New Guidelines for Cardiopulmonary Resuscitation and Emergency Cardiac Care:

Changes in the Management of Cardiac Arrest 1267

K. B. KERN, H. R. HALPERIN, J. FIELD

THE PATIENT-PHYSICIAN RELATIONSHIP

Patient-Physician Communication During Outpatient Palliative Treatment Visits: An Observational Study 1351

S. B. DETMAR, M. J. MULLER, L. D. V. WEVER, J. H. SCHORNAGEL, N. K. AARONSON

BOOKS, JOURNALS, NEW MEDIA 1359

The Cambridge World History of Food, vols 1 & 2 (Kiple, Ornelas, eds)

REVIEWED BY D. KRITCHEVSKY

Neurosurgery in the Tropics: A Practical Approach to Common Problems (Rosenfeld, Watters)

REVIEWED BY P. A. LEGGAT

Treatment of Child Abuse: Common Ground for Mental Health, Medical, and Legal Practitioners (Reece, ed)

REVIEWED BY A. S. BOTASH

Comprehensive Textbook of Suicidology (Maris et al)

REVIEWED BY L. D. HANKOFF

Books, Journals, New Media Received

JAMA PATIENT PAGE

Electroconvulsive Therapy 1390

News and Analysis

MEDICAL NEWS & PERSPECTIVES 1279

20 Years After AIDS Emerges, HIV's Complexities Still Loom Large

New HIV Therapy Guidelines

Playing It Cool in Stroke Research

THE WORLD IN MEDICINE 1283

UN Calls for Global AIDS Effort

Just Say NO to Aspirin?

Monoclonal Milestone

Killer Alcohol

FROM THE CENTERS FOR DISEASE CONTROL AND PREVENTION 1284

Primary and Secondary Syphilis—United States, 1999

Outbreak of Syphilis Among Men Who Have Sex With Men—Southern California, 2000

Satellite Broadcast on Epidemiology and Prevention of Vaccine-Preventable Diseases

Mortality From Coronary Heart Disease and Acute Myocardial Infarction—United States, 1998

©2001 American Medical Association. All rights reserved.

(Reprinted) 1255

JAMA

EDITORIAL STAFF

EDITOR

Catherine D. DeAngelis, MD, MPH

Executive Deputy Editor: Phil B. Fontanarosa, MD**Deputy Editors:** Richard M. Glass, MD, Drummond Rennie, MD, Margaret A. Winker, MD**Senior Contributing Editor:** M. Therese Southgate, MD**Managing Senior Editor:** Annette Flanagan**Senior Editor:** Stephen J. Lurie, MD, PhD**Contributing Editors:** Charles B. Clayman, MD, Helene M. Cole, MD, Thomas B. Cole, MD, MPH, David S. Cooper, MD, Michael S. Lauer, MD, Wendy Levinson, MD, David H. Mark, MD, MPH, Robert A. McNutt, MD, Harriet S. Meyer, MD, Carin M. Olson, MD, Jeanette M. Smith, MD, Jody W. Zylke, MD**Consulting Editors:** Robert A. Clark, MD, Deborah J. Cook, MD**Statistical Editor:** Naomi Vaisrub, PhD**Associate Editors:** Charlene Breedlove, Roxanne K. Young**Fishbein Fellow:** Alice T. D. Hughes, MD**Medical News & Perspectives:** Marsha F. Goldsmith (editor); Mike Mitka, Joan Stephenson, PhD, Brian Vastag (associate editors); Rebecca Voelker (contributing editor)**Assistant Editors:** Jennifer Reiling, Juliana M. Walker**MSJAMA:** Alison J. Huang, MPHil, Stefan C. Weiss, MHS (coeditors)**Assistant to the Editor:** Helga Fritz**Administrative Assistant:** Nadine Siewnarine**Editorial Graphics:** Ronna Henry Siegel, MD (director); Cassio Lynn (medical illustrator)**Electronic Media:** Michelle Kurzynski (director); Keith Huff (Web development editor); Erin Giannini (Web copy editor); Marla A. Hall (Web office manager); Gemma Wall (editorial assistant)**Editorial Systems and Administration:** Elaine Williams (director); Gale Saulsbery (database specialist); Lenette Gardner-Gullens (electronic input supervisor); Fanny L. Brown, Celina Canchola (electronic input specialists)**Staff Assistant:** Gloria Tate**Editorial Assistants:** Patricia Joworski (group supervisor); Mary Cannon, Susan Collister, Dawn Cortez, Audrey Forman, Shirley Gogins, Charisse Green, Gwenn Gregg, Lisa Hardin, Carmina Landeros, Mary Ann Lilly, Rosa E. Miranda, Lupe Morales, Ethel Pinkston, Cara Savage**Editorial Processing Division:** Cheryl Iverson (director); Paul Frank (electronic editing specialist); Monica Mungle (assistant electronic editing specialist)**Copyediting:** Stacy L. Christiansen (director); Joy K. Jaeger (abstracts editor); Coleen Adamson, Susan R. Benner (senior copy editors); Jennifer L. Reddy, Phil Sefton, Beverly Stewart

PUBLISHING AND BUSINESS STAFF

Vice President, Publishing: Robert L. Kennett**Publisher:** Peter J. Murphy**Production and Distribution Division:****Directors:** Karen Adams-Taylor, Paul Gasecki, Vanessa Hayden**Managers:** David Antos, Karen Branham, Debbie Camp, Diane Darnell, Karl Elvin, Betty Frigerio, Terri Hanley, Mary Ellen Johnston, Carole Piszker, Susan Price, Charl Richey, Carmela Ware**Production Assistants:** Kristy Kambanis, Ruth Sprague**Production Associates and Specialists:****Advertising and Production Services:** LaWanda Brown, Susan Chiara, Mary Anne Donley, Sarah Powell, Denise Steinhauser, Jo Anne Turner, Ellen Yoshihara**Composition:** Rebecca Aiken, Brenda Chandler-Grayer, Amy Evers, Fred Furtner, Mary Ann Kuranda, Sandra Lopez**Database & New Media:** Bruce McGregor (indexer), Clifford O. Barrett, Gail Barrett, Regina Brownlee, La'son Diggs Sledge, Angela Smits**Distribution:** Linda Alexander, Michelle Robinson**Graphics:** Joe Amft, Noel Chaparro, Carolyn Hall, Maria Kowalkowski, Chris Meyer, JoAnne Weiskopf**Proofreading:** Daniel James, Teresa H. Ormotek, Mary Kay Tinerella, Barbara Wojtowicz, Agnes A. Zarkadas**Circulation Processing:** Robert Herling (director);

Susan Stoken, Alfred Tomaselli (managers);

Reginald Jordan, Kathryn Osten (specialists)

Circulation Development: Bina Oza (director);

Vida Damijonaitis, Donna Goldman, Michael McGraw (managers); Sandra Garzon (specialist)

Licensing and Permissions: Norman Frankel (director);

Rhonda Bailey (permissions); fax: (312) 464-5835

Subscriber Services: (800) 262-2350; fax: (312) 464-5831; e-mail: ama-sub@ama-assn.org**Advertising Sales Staff:**

Stuart H. Williams (director)

Eastern: Susan J. Carollo, Alice H. Herman (representatives); 119 Cherry Hill Rd, Third Floor, Parsippany, NJ 07054, (973) 263-9191**Midwest/Farwest:** Jeffery J. Bonistalli (representative); 515 N State St, Chicago, IL 60610, (312) 464-2551**Classified Advertising:** Crystal Wells (director); 515 N State St, Chicago, IL 60610, (312) 464-2456**Marketing Services Manager:** Kathleen Hiltz

AMA EXECUTIVES AND TRUSTEES

Executive Vice President, Chief Executive Officer: E. Ratcliffe Anderson, Jr, MD**Senior Vice President, Publishing and Business Services:** Robert A. Musacchio, PhD**President:** Randolph D. Smoak, Jr, MD**President-Elect:** Richard F. Corlin, MD**Immediate Past President:** Thomas R. Reardon, MD**Speaker, House of Delegates:** John A. Knote, MD**Vice-Speaker, House of Delegates:** Nancy H. Nielsen, MD**Trustees:** D. Ted Lewers, MD (chair); Timothy T. Flaherty, MD (chair-elect); Yank D. Coble, Jr, MD (secretary-treasurer); Herman I. Abramowitz, MD; Susan Hersberg Adelman, MD; Duane M. Cady, MD; J. Edward Hill, MD; William H. Mahood, MD; Sandeep "Sunny" Mistry (student); John C. Nelson, MD; Donald J. Palmisano, MD; William G. Plested, MD; Liana Puskas, MD (resident); Joseph A. Riggs, MD; Bruce A. Scott, MD (young physician)

JOURNAL OVERSIGHT COMMITTEE

Joshua Lederberg, PhD (chair), Christine K. Cassel, MD, David A. Kessler, MD, JD, Robert A. Musacchio, PhD, William M. Passano, Jr, Roy M. Pitkin, MD, Kenneth I. Shine, MD

EDITORIAL BOARD

Daniel M. Albert, MD
University of Wisconsin Hospital
and Clinics
Madison, Wis**Kenneth A. Arndt, MD**
Harvard Medical School
Boston, Mass**H. David Banta, MD**
The Netherlands Organization
for Applied Scientific Research
Leiden, the Netherlands**Jack D. Barchas, MD**
Cornell University
Medical College
New York, NY**Michael Berger, MD**
Heinrich Heine Universität Düsseldorf
Düsseldorf, Germany**Robert J. Blendon, ScD**
Harvard University
Boston, Mass**Marjorie A. Bowman, MD, MPA**
University of Pennsylvania
Health System
Philadelphia, Pa**James E. Dalen, MD**
University of Arizona
College of Medicine
Tucson, Ariz**Lois DeBakey, PhD**
Baylor College of Medicine
Houston, Tex**Pierre Durieux, MD, MPH**
Université Paris 6
Paris, France**Ronald G. Evens, MD**
Barnes-Jewish Hospital
St Louis, Mo**Michael E. Johns, MD**
Robert W. Woodruff
Health Sciences Center
of Emory University
Atlanta, Ga**Colin I. Johnston, MB, BS**
University of Melbourne
Melbourne, Australia**Mary-Claire King, PhD**
University of Washington
Seattle, Wash**Wayne F. Larrabee, Jr, MD**
University of Washington
Seattle, Wash**Joseph K. Lim, MD**
Yale University School of Medicine
New Haven, Conn**Donald A. B. Lindberg, MD**
National Library of Medicine
Bethesda, Md**Kenneth D. McClatchey, MD, DDS**
Loyola University Medical Center
Maywood, Ill**C. David Naylor, MD, DPHil**
University of Toronto
Toronto, Ontario, Canada**Claude H. Organ, Jr, MD**
University of California-Davis, East Bay
Oakland, Calif**Edmund D. Pellegrino, MD**
Georgetown University
Washington, DC**Uwe E. Reinhardt, PhD**
Princeton University, Princeton, NJ**Povl Riis, MD, DSCI, DHC**
Professor of Medicine
Copenhagen, Denmark**Frederick P. Rivara, MD, MPH**
University of Washington
Seattle, Wash**William L. Roper, MD, MPH**
University of North Carolina at Chapel Hill
Chapel Hill, NC**Roger N. Rosenberg, MD**
University of Texas Southwestern Medical Center
Dallas, Tex**Masaaki Terada, MD**
National Cancer Center
Tokyo, Japan

INTERNATIONAL ADVISORY COMMITTEE

Bassel Atallah, MD, JAMA—Middle East**Mauro Bologna, MD, JAMA—Italy****Csaba Farsang, MD, DSc, JAMA—Hungary****Evarist Feliu Frasnedo, MD, JAMA—Spain****Zbigniew A. Gaciong, MD, PhD, JAMA—Poland****Carlos R. Gherardi, MD, JAMA—Argentina****Carla Gikovate, MD, MSc, JAMA—Brazil****Hiromasa Ishii, MD, JAMA—Japan****Evin Kantemir, MD, JAMA—Turkey****A. J. Khan, SI, FRCP, JAMA—Pakistan****Li Chengyi, MD, JAMA—China****Victor Hugo Olmedo Canchola, MD, JAMA—Mexico****Ivan Vidmar, MD, JAMA—Slovenia****Jiří Widimský, MUDr, DrSc, JAMA—Czech/Slovak****Alexei Yurenev, MD, JAMA—Russia**