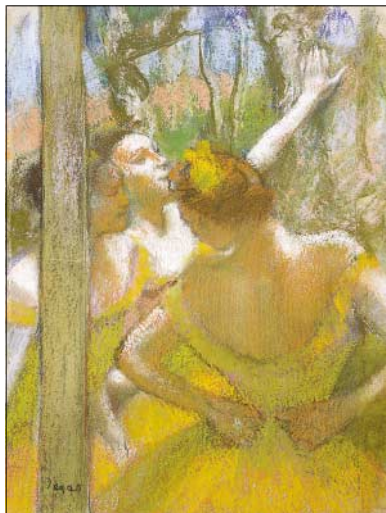


JAMA

The Journal of the American Medical Association



Edgar Degas (1834-1917), *Dancers*, 1897, French.

Letters

Brain Injury Resulting From Falls Among Elderly Persons 2665

J. A. STEVENS, N. ADEKOYA, P. KANNUS

Graduating Residents' Perceptions of Their Preparedness for Practice

J. L. KAUFMAN; B. M. ROTHSCHILD; D. MERRILL, J. P. RATHMELL, M. J. LEMA; D. BLUMENTHAL

Physical Activity Counseling in Primary Care

A. S. ROBBINS, V. P. FONSECA

Meningococcal Disease in College Students

Z. D. MULLA; M. G. BRUCE, N. E. ROSENSTEIN, K. A. SHUTT

Using Meta-analysis to Answer Clinical Questions

R. J. F. LAHEIJ; D. S. THEODOROPoulos, G. A. THEODOROPoulos, D. L. PECORARO; J. P. A. IOANNIDIS, D. G. CONTOPOULOS-IOANNIDIS, J. LAU

Politics and Medicare

D. M. FRANKFORD, M. A. GOLDBERG, J. S. HACKER, J. OBERLANDER, M. A. PETERSON; R. L. KANE

Research Letter 2671

Toxic Landscaping of Facilities for Developmentally Disabled Adults

A. BURDA, M. B. MYCYK, M. WAHL, C. ZIA

118 Years of
CONTINUOUS
PUBLICATION

EDITOR
Catherine D. DeAngelis, MD, MPH

www.jama.com

December 5, 2001

ORIGINAL CONTRIBUTIONS

Aptiganel Hydrochloride in Acute Ischemic Stroke: A Randomized Controlled Trial 2673

G. W. ALBERS, L. B. GOLDSTEIN, D. HALL, L. M. LESKO;
FOR THE APTIGANEL ACUTE STROKE INVESTIGATORS

Survival Effect of Lung Transplantation Among Patients With Cystic Fibrosis 2683

T. G. LIU, F. R. ADLER, B. C. CAHILL, S. C. FITZSIMMONS, D. HUANG, J. R. HIBBS, B. C. MARSHALL

Survival by Time of Day of Hemodialysis in an Elderly Cohort 2690

D. L. BLIWISE, N. G. KUTNER, R. ZHANG, K. P. PARKER

School-Associated Violent Deaths in the United States, 1994-1999 2695

M. ANDERSON, J. KAUFMAN, T. R. SIMON, L. BARRIOS, L. PAULOZZI, G. RYAN, R. HAMMOND, W. MODZELESKI, T. FEUCHT, L. POTTER;
AND THE SCHOOL-ASSOCIATED VIOLENT DEATHS STUDY GROUP

CARING FOR THE CRITICALLY ILL PATIENT

Delirium in Mechanically Ventilated Patients: Validity and Reliability of the Confusion Assessment Method for the Intensive Care Unit (CAM-ICU) 2703

E. W. ELY, S. K. INOUE, G. R. BERNARD, S. GORDON, J. FRANCIS, L. MAY, B. TRUMAN, T. SPEROFF, S. GAUTAM, R. MARGOLIN, R. P. HART, R. DITTUS

SPECIAL COMMUNICATION

Large-Scale Quarantine Following Biological Terrorism in the United States: Scientific Examination, Logistic and Legal Limits, and Possible Consequences 2711

J. BARBERA, A. MACINTYRE, L. GOSTIN, T. INGLESBY, T. O'TOOLE, C. DEATLEY, K. TONAT, M. LAYTON

EDITORIALS

Ensuring Patient Safety in Clinical Trials for Treatment of Acute Stroke 2718

K. J. BECKER, D. L. TIRSCHWELL

Patient Selection for Lung Transplantation 2720

J. R. MAURER

(Reprinted) (TABLE OF CONTENTS CONTINUED ON PAGE 2633.) **2631**

©2001 American Medical Association. All rights reserved.

JAMA

Humanities

THE COVER 2639

Dancers

M. T. SOUTHGATE

POETRY AND MEDICINE 2642

Taking the Keys Away

W. McDONALD

JAMA 100 YEARS AGO 2643

Prophylaxis of Venereal Disease

Reader Service

This Week in JAMA 2635

Masthead 2636

Abstracts 2644

Archives Journals Abstracts 2649

The Key and Critical Objectives of JAMA 2651

Obituary Listing 2743

Continuing Medical Education 2745

Classified Advertising and Announcements 2748

Index of Advertisers 2765

Reference Directories

Meetings in the United States and International Meetings November 21, 2001

Organizations of Medical Interest and State Medical Associations and Examinations and Licensure July 25, 2001

JAMA Instructions for Authors

JULY 4, 2001

Contact Information 2765

Subscriptions: (800) 262-2350

fax: (312) 464-5831

ama-subs@ama-assn.org

Permissions: (312) 464-2513

fax: (312) 464-5835

rhonda_bailey@ama-assn.org

Editorial Office: (312) 464-2402

fax: (312) 464-5824

jamams@ama-assn.org

All articles published, including editorials, letters, and book reviews, represent the opinions of the authors and do not reflect the official policy of the American Medical Association or the Institution with which the author is affiliated, unless this is clearly specified.

www.jama.com

LETTER FROM AFGHANISTAN

Malnutrition and Mortality in Kohistan District, Afghanistan, April 2001 2723

F. ASSEFA, M. Z. JABARKHIL, P. SLAMA, P. SPIEGEL

msJAMA 2731

New Directions in Tobacco Control

R. RAJKUMAR

Reducing Smoking Prevalence to 10% in Five Years

A. BITTON, C. FICHTENBERG, S. GLANTZ

Removing Barriers to Local Tobacco Regulation

B. J. FOX

The Worldwide Tobacco Treaty

M. L. MYERS, J. P. WILKENFELD

The Necessity of Global Tobacco Regulations

D. BETTCHER, C. SUBRAMANIAM

BOOKS, JOURNALS, NEW MEDIA 2738

Sexual Chemistry: A History of the Contraceptive Pill (Marks)

REVIEWED BY E. BARRETT-CONNOR

PC, M. D.: How Political Correctness Is Corrupting Medicine (Satel)

REVIEWED BY J. L. RAPOPORT

A War of Nerves: Soldiers and Psychiatrists in the Twentieth Century (Shephard)

REVIEWED BY C. C. ENGEL, JR

Blood Red Roses: The Archaeology of a Mass Grave From the Battle of Towton AD 1461 (Fiorato et al, eds)

REVIEWED BY F. BUTZEN

Books, Journals, New Media Received

JAMA PATIENT PAGE

School Violence 2766

News and Analysis

MEDICAL NEWS & PERSPECTIVES 2655

Public Health Triumphs at WTO Conference

Anesthesiologists Urge Safe, Ethical Practice

Miscellanea Medica

IOM Members

FROM THE FOOD AND DRUG ADMINISTRATION 2660

New Drug for HIV-1 Infection

Oral Sodium Phosphate

Remote Data Pacemaker

ACADEMIC ALERT 2661

Midwest Trials of Heart-Assist Device

FROM THE CENTERS FOR DISEASE CONTROL AND PREVENTION 2662

Investigation of Bioterrorism-Related Anthrax, 2001

Recommendations for Antimicrobial Prophylaxis for Children and Breastfeeding Mothers and Treatment of Children With Anthrax

Potential Risk for Lead Exposure in Dental Offices

©2001 American Medical Association. All rights reserved.

(Reprinted) 2633

JAMA

EDITORIAL STAFF

EDITOR
Catherine D. DeAngelis, MD, MPH

Executive Deputy Editor: Phil B. Fontanarosa, MD

Deputy Editors: Richard M. Glass, MD, Drummond Rennie, MD, Margaret A. Winker, MD

Senior Contributing Editor: M. Therese Southgate, MD

Managing Senior Editor: Annette Flanagan

Senior Editor: Stephen J. Lurie, MD, PhD

Contributing Editors: Charles B. Clayman, MD, Helene M. Cole, MD, Thomas B. Cole, MD, MPH, David S. Cooper, MD, Michael S. Lauer, MD, Wendy Levinson, MD, David H. Mark, MD, MPH, Robert A. McNutt, MD, Harriet S. Meyer, MD, Carin M. Olson, MD, Jeanette M. Smith, MD, Jody W. Zylke, MD

Consulting Editor: Deborah J. Cook, MD

Statistical Editor: Naomi Vaisrub, PhD

Associate Editors: Charlene Breedlove, Roxanne K. Young

Fishbein Fellow: Janet M. Torpy, MD

Medical News & Perspectives: Marsha F. Goldsmith (editor); Mike Mitka, Joan Stephenson, PhD, Brian Vastag (associate editors); Rebecca Voelker (contributing editor)

Assistant Editors: Jennifer Reiling, Juliana M. Walker

MSJAMA: Stuart P. Weisberg (editor)

Assistant to the Editor: Helga Fritz

Administrative Assistant: Nadine Siewnarine

Editorial Graphics: Ronna Henry Siegel, MD (director); Cassio Lynm (medical illustrator)
Electronic Media: Michelle Kurzynski (director); Katherine Behar, Erin Giannini (associate Web editors); Marla A. Hall (Web office manager)

Editorial Systems and Administration: Elaine Williams (director); Gale Saulsberry (database specialist); Lenette Gardner-Gullens (electronic input supervisor); Fanny L. Brown, Celina Canchola (electronic input specialists)

Staff Assistant: Gloria Tate

Editorial Assistants: Patricia Joworski (group supervisor); Mary Cannon, Susan Collister, Dawn Cortez, Audrey Forman, Shirley Gogins, Gwenn Gregg, Lisa Hardin, Carmina Landeros, Mary Ann Lilly, Rachell M. Lozano, Rosa E. Miranda, Lupe Morales, Ethel Pinkston, Cara Savage, Kenny Stewart

Editorial Processing Division: Cheryl Iverson (director); Paul Frank (electronic editing specialist); Monica Mungle (assistant electronic editing specialist); J. D. Neff (associate editorial systems developer)

Copyediting: Stacy L. Christiansen (director); Joy K. Jaeger (abstracts editor); Coleen Adamson, Susan R. Benner, Beverly Stewart (senior copy editors); Phil Sefton, Heather A. Shebel, Cara Wallace

PUBLISHING AND BUSINESS STAFF

Interim Vice President, Publishing: Peter L. Payerli

Publisher: Peter J. Murphy

Production and Distribution Division:

Directors: Karen Adams-Taylor, Paul Gasecki, Vanessa Hayden

Managers: David Antos, Karen Branham, Debbie Camp, Diane Darnell, Karl Elvin, Betty Frigerio, Terri Hanley, Mary Ellen Johnston, Carole Piszker, Susan Price, Charl Richey, Carmela Ware

Production Assistant: Kristy Kambanis

Production Associates and Specialists:

Advertising and Production Services: LaWanda Brown, Susan Chiara, Mary Anne Donley, Brian McCartney, Sarah Powell, Denise Steinhauer, Ellen Yoshihara

Composition: Rebecca Aiken, Brenda Chandler-Grayer, Amy Evers, Fred Furtner, Mary Ann Kuranda, Sandra Lopez
Database & New Media: Bruce McGregor (indexer), Clifford O. Barrett, Gail Barrett, Regina Brownlee, Rowena F. Dagang, John Marcinek, La'son Diggs Sledge, Angela Smits

Distribution: Linda Alexander, Michelle Robinson

Graphics: Joe Amft, Noel Chaparro, Carolyn Hall, Maria Kowalkowski, Chris Meyer, JoAnne Weiskopf

Proofreading: Daniel James, Teresa H. Omiolek, Mary Kay Tinerella, Barbara Wojtowicz, Agnes A. Zarkadas

Circulation Processing: Karen Howes (director); Alfred Tomaselli (manager); Reginald Jordan, Kathryn Osten (specialists); Julie Burton (assistant application administrator)

Circulation Development: Bina Oza (director); Vida Damijonaitis, Donna Goldman, Michael McGraw (managers); Sandra Garzon (specialist)

Licensing and Permissions: Norman Frankel (director); Rhonda Bailey (permissions); fax: (312) 464-5835

Subscriber Services: (800) 262-2350; fax: (312) 464-5831; e-mail: ama-subs@ama-assn.org

Advertising Sales Staff:
Stuart H. Williams (director)

Eastern: Susan J. Carollo, Nancy E. Souza (representatives); 119 Cherry Hill Rd, Third Floor, Parsippany, NJ 07054, (973) 263-9191

Midwest/Farwest: Jeffery J. Bonistalli (representative); 515 N State St, Chicago, IL 60610, (312) 464-2551

Classified Advertising: Crystal Wells (director); 515 N State St, Chicago, IL 60610, (312) 464-2456

Marketing Services Manager: Kathleen Hiltz

AMA EXECUTIVES AND TRUSTEES

Senior Vice President, Publishing and Business Services: Robert A. Musacchio, PhD

President: Richard F. Corlin, MD

President-Elect: Yank D. Coble, Jr, MD

Immediate Past President: Randolph D. Smoak, Jr, MD

Speaker, House of Delegates: John A. Knote, MD

Vice-Speaker, House of Delegates: Nancy H. Nielsen, MD, PhD

Trustees: Timothy T. Flaherty, MD (chair); J. Edward Hill, MD (chair-elect); Donald J. Palmisano, MD (secretary-treasurer); Herman I. Abramowitz, MD; Susan Hersberg Adelman, MD; Duane M. Cady, MD; Ronald M. Davis, MD; Hillary Johnson (student); D. Ted Lewers, MD; John C. Nelson, MD; William G. Plested III, MD; J. James Rohack, MD; Joseph A. Riggs, MD; Bruce A. Scott, MD (young physician); Peter Y. Watson, MD (resident)

JOURNAL OVERSIGHT COMMITTEE

Joshua Lederberg, PhD (chair), Christine K. Cassel, MD, David A. Kessler, MD, JD, Robert A. Musacchio, PhD, William M. Passano, Jr, Roy M. Pitkin, MD, Kenneth I. Shine, MD

EDITORIAL BOARD

Daniel M. Albert, MD
University of Wisconsin Hospital
and Clinics
Madison, Wis

Kenneth A. Arndt, MD
Harvard Medical School
Boston, Mass

H. David Banta, MD
The Netherlands Organization
for Applied Scientific Research
Leiden, the Netherlands

Michael Berger, MD
Heinrich Heine Universität Düsseldorf
Düsseldorf, Germany

Robert J. Blendon, ScD
Harvard University
Boston, Mass

Marjorie A. Bowman, MD, MPA
University of Pennsylvania
Health System
Philadelphia, Pa

James E. Dalen, MD
University of Arizona
College of Medicine
Tucson, Ariz

Lois DeBaakey, PhD
Baylor College of Medicine
Houston, Tex

Pierre Durieux, MD, MPH
Université Paris 6
Paris, France

Ronald G. Evens, MD
Barnes-Jewish Hospital
St Louis, Mo

Michael E. Johns, MD
Robert W. Woodruff
Health Sciences Center
of Emory University
Atlanta, Ga

Colin I. Johnston, MB, BS
University of Melbourne
Melbourne, Australia

Mary-Claire King, PhD
University of Washington
Seattle, Wash

Wayne F. Larrabee, Jr, MD
University of Washington
Seattle, Wash

Joseph K. Lim, MD
Yale University School of Medicine
New Haven, Conn

Donald A. B. Lindberg, MD
National Library of Medicine
Bethesda, Md

Kenneth D. McClatchey, MD, DDS
Loyola University Medical Center
Maywood, Ill

C. David Naylor, MD, DPhil
University of Toronto
Toronto, Ontario, Canada

Claude H. Organ, Jr, MD
University of California—Davis, East Bay
Oakland, Calif

Edmund D. Pellegrino, MD
Georgetown University
Washington, DC

Uwe E. Reinhardt, PhD
Princeton University, Princeton, NJ

Povl Riis, MD, DSCI, DHC
Professor of Medicine
Copenhagen, Denmark

Frederick P. Rivara, MD, MPH
University of Washington
Seattle, Wash

William L. Roper, MD, MPH
University of North Carolina at Chapel Hill
Chapel Hill, NC

Roger N. Rosenberg, MD
University of Texas Southwestern Medical Center
Dallas, Tex

Masaaki Terada, MD
National Cancer Center
Tokyo, Japan

INTERNATIONAL ADVISORY COMMITTEE

Bassel Atallah, MD, JAMA—Middle East
Mauro Bologna, MD, JAMA—Italy

Csaba Farsang, MD, DSc, JAMA—Hungary

Igor Francetic, MD, PhD, JAMA—Croatia

Evarist Feliu Frasnado, MD, JAMA—Spain

Zbigniew A. Gaciong, MD, PhD, JAMA—Poland

Carlos R. Gherardi, MD, JAMA—Argentina

Carla Gikovate, MD, MSc, JAMA—Brazil

Hiromasa Ishii, MD, JAMA—Japan

Evin Kantemir, MD, JAMA—Turkey

A. J. Khan, SI, FRCP, JAMA—Pakistan

Li Chengyi, MD, JAMA—China

Victor Hugo Olmedo Canchola, MD, JAMA—Mexico

Ivan Vidmar, MD, JAMA—Slovenia

Jiří Widimský, MUDr, DrSc, JAMA—Czech/Slovak

Alexei Yurenev, MD, JAMA—Russia