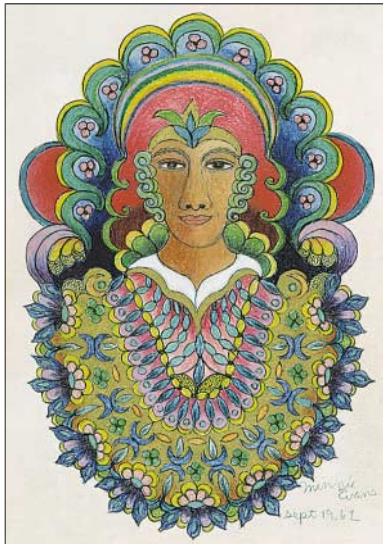


JAMA

The Journal of the American Medical Association



Minnie Evans (1892-1987), *King*, 1962, American.

November 13, 2002

ORIGINAL CONTRIBUTIONS

Effects of Cognitive Training Interventions With Older Adults: A Randomized Controlled Trial 2271

K. BALL, D. B. BERCH, K. F. HELMERS, J. B. JOBE, M. D. LEVECK, M. MARSISKE, J. N. MORRIS, G. W. REBOK, D. M. SMITH, S. L. TENNSTEDT, F. W. UNVERZAGT, S. L. WILLIS; FOR THE ACTIVE STUDY GROUP

Growth Hormone and Sex Steroid Administration in Healthy Aged Women and Men: A Randomized Controlled Trial 2282

M. R. BLACKMAN, J. D. SORKIN, T. MÜNZER, M. F. BELLANTONI, J. BUSBY-WHITEHEAD, T. E. STEVENS, J. JAYME, K. G. O'CONNOR, C. CHRISTMAS, J. D. TOBIN, K. J. STEWART, E. COTTRELL, C. ST. CLAIR, K. M. PABST, S. M. HARMAN

Behavioral Training With and Without Biofeedback in the Treatment of Urge Incontinence in Older Women: A Randomized Controlled Trial 2293

K. L. BURGIO, P. S. GOODE, J. L. LOCHER, M. G. UMLAUF, D. L. ROTH, H. E. RICHTER, R. E. VARNER, L. K. LLOYD

Walking and Leisure-Time Activity and Risk of Hip Fracture in Postmenopausal Women 2300

D. FESKANICH, W. WILLETT, G. COLDITZ

Prevalence of Olfactory Impairment in Older Adults 2307

C. MURPHY, C. R. SCHUBERT, K. J. CRUICKSHANKS, B. E. K. KLEIN, R. KLEIN, D. M. NONDAHL

Academic Geriatric Programs in US Allopathic and Osteopathic Medical Schools 2313

G. A. WARSHAW, E. J. BRAGG, R. W. SHAULL, C. J. LINDSELL

BRIEF REPORT

Pregnancy in the Sixth Decade of Life: Obstetric Outcomes in Women of Advanced Reproductive Age 2320

R. J. PAULSON, R. BOOSTANFAR, P. SAADAT, E. MOR, D. E. TOURGEMAN, C. C. SLATER, M. M. FRANCIS, J. K. JAIN

EDITORIAL

Use It or Lose It: Activity May Be the Best Treatment for Aging 2333

C. K. CASSEL

CLINICIAN'S CORNER

PERSPECTIVES ON CARE AT THE CLOSE OF LIFE

Alzheimer Disease: "It's Okay, Mama, If You Want to Go, It's Okay" 2324

A. C. HURLEY, L. VOLICER

Responding to Requests for Physician-Assisted Suicide: "These Are Uncharted Waters for Both of Us . . ." 2332

M. W. RABOW, A. J. MARKOWITZ

Letters

Risk of Motor Vehicle Crashes in Patients With Cataract Surgery 2262

J. C. JAVITT; C. OWSLEY, G. MCGWIN, JR

Thrombolytic Therapy vs Angioplasty in Acute Myocardial Infarction

C. PECHLANER, R. BELLMANN; A. YEE, A. GABAYAN, E. V. CARBAJAL; T. AVERSANO

A Woman Attempting to Discontinue Hormone Therapy

R. R. FREEDMAN; M. KLEEREKOPER; D. GRADY

Antioxidants and Risk of Alzheimer Disease

A. E. VARNER; S. BRENNER; M. C. MORRIS, D. A. EVANS, J. L. BIENIAS, C. C. TANGNEY, D. A. BENNETT, N. AGGARWAL, R. S. WILSON, P. A. SCHERR; M. J. ENGELHART, M. M. B. BRETTELER

Research Letter 2266

Vitamin E and C Supplements and Risk of Dementia

D. LAURIN, D. J. FOLEY, K. H. MASAKI, L. R. WHITE, L. J. LAUNER

119 Years of CONTINUOUS PUBLICATION

EDITOR
Catherine D. DeAngelis, MD, MPH

www.jama.com

(Reprinted) (TABLE OF CONTENTS CONTINUED ON PAGE 2221.) 2219

©2002 American Medical Association. All rights reserved.

JAMA

Humanities

THE COVER 2225

King

M. T. SOUTHGATE

POETRY AND MEDICINE 2229

Judgment Day

G. YOUNG

A PIECE OF MY MIND 2231

Grace Notes

B. SHORE

JAMA 100 YEARS AGO 2344

Physicians and Longevity

Reader Service

This Week in JAMA 2223

Masthead 2224

Abstracts 2237

Archives Journals Abstracts 2241

Correction 2268

CME Announcement 2268

Physician Marketplace 2345

Index of Advertisers 2357

Reference Directories

Meetings, Organizations of Medical Interest and State Medical Associations, and Examinations and Licensure are available at <http://pubs.ama-assn.org/meetings.html>.

JAMA Instructions for Authors

July 3, 2002

JAMA Key and Critical Objectives

SEPTEMBER 11, 2002

Contact Information 2357

Subscriptions: (800) 262-2350

fax: (312) 464-5831

ama-subs@ama-assn.org

Permissions: (312) 464-2513

fax: (312) 464-5835

rhonda_bailey@ama-assn.org

Editorial Office: (312) 464-2402

fax: (312) 464-5824

jamams@ama-assn.org

All articles published, including editorials, letters, and book reviews, represent the opinions of the authors and do not reflect the official policy of the American Medical Association or the institution with which the author is affiliated, unless this is clearly specified.

www.jama.com

CONTEMPO UPDATES: LINKING EVIDENCE AND EXPERIENCE

Age-Related Macular Degeneration 2233

J. L. GOTTLIEB

BOOKS, JOURNALS, NEW MEDIA 2337

A Life Shaken: My Encounter With Parkinson's Disease (Havemann)

REVIEWED BY R. A. HAUSER

Lucky Man: A Memoir (Fox)

REVIEWED BY A. N. WILNER

Losing My Mind: An Intimate Look at Life With Alzheimer's (DeBaggio)

REVIEWED BY N. AGGARWAL

Children Who See Too Much: Lessons From the Child Witness to Violence Project (Groves)

REVIEWED BY M. AMAYA

Body Heat: Temperature and Life on Earth (Blumberg)

REVIEWED BY P. G. IATRIDIS

Books, Journals, New Media Received

JAMA PATIENT PAGE

Age-Related Macular Degeneration 2358

News and Analysis

MEDICAL NEWS & PERSPECTIVES 2247

Biological Secrets of Exceptional Old Age:

Centenarian Study Seeks Insight Into Aging Well

Hitching a Ride to Health Care:

Retired Physicians Volunteer to Serve the Uninsured

Elder Abuse and Neglect a New Research Topic

THE WORLD IN MEDICINE 2257

Job Stress and Heart Disease

Alzheimer Disease Vaccine

WHO Director to Step Down

Atomic Bomb Survivors

FROM THE CENTERS FOR DISEASE CONTROL AND PREVENTION 2258

Recommended Adult Immunization Schedule—United States, 2002-2003

Outbreak of Listeriosis—Northeastern United States, 2002

©2002 American Medical Association. All rights reserved.

(Reprinted) 2221

JAMA

EDITORIAL STAFF

EDITOR

Catherine D. DeAngelis, MD, MPH

Executive Deputy Editor: Phil B. Fontanarosa, MD

Deputy Editors: Richard M. Glass, MD, Drummond Rennie, MD, Margaret A. Winker, MD

Senior Contributing Editor: M. Therese Southgate, MD

Managing Senior Editor: Annette Flanagin

Senior Editors: Stephen J. Lurie, MD, PhD, Ronna Henry Siegel, MD

Contributing Editors: Charles B. Clayman, MD, Helene M. Cole, MD, Thomas B. Cole, MD, MPH, David S. Cooper, MD, Michael S. Lauer, MD, Wendy Levinson, MD, David H. Mark, MD, MPH, Robert A. McNutt, MD, Harriet S. Meyer, MD, Jeanette M. Smith, MD, Janet M. Torpy, MD, Jody W. Zylke, MD

Consulting Editor: Deborah J. Cook, MD

Statistical Editor: Naomi Vaisrub, PhD

Associate Editors: Charlene Breedlove, Roxanne K. Young

Fishbein Fellow: Sarah Pressman Lovinger, MD

Medical News & Perspectives: Marsha F. Goldsmith (editor); Mike Mitka, Joan Stephenson, PhD, Brian Vastag (associate editors); Rebecca Voelker (contributing editor)

Assistant Editors: Jennifer Reiling, Juliana M. Walker

MSJAMA: Jane van Dis, Stuart P. Weisberg (editors)

Assistant to the Editor: Helga Fritz

Administrative Assistant: Nadine Siewnarine

Medical Illustrator: Cassio Lynn

Electronic Media: Michelle Kurzynski (director); Katherine Behar, Erin Giannini (associate Web editors); Marla A. Hall (Web office manager)

Editorial Systems and Administration: Elaine Williams (director); Gale Saulsberry (database specialist); Lenette Gardner-Gullens (electronic input supervisor); Fanny L. Brown, Celina Canchola (electronic input specialists)

Staff Assistant: Gloria Tate

Editorial Assistants: Patricia Joworski (group supervisor); Mary Cannon, Susan Collister, Carmina Conley, Dawn Cortez, Audrey Forman, Shirley Gogins, Glenn Gregg, Lisa Hardin, Mary Ann Lilly, Rachell M. Lozano, Rosa E. Miranda, Lupe Morales, Ethel Pinkston, Kenny Stewart

Editorial Processing Division: Cheryl Iverson (director); Paul Frank, Monica Mungle (editorial systems managers); J. D. Neff (associate editorial systems developer)

Copyediting: Stacy L. Christiansen (director); Joy K. Jaeger (abstracts editor); Coleen Adamson, Susan R. Benner, Beverly Stewart (senior copy editors); Phil Sefton, Heather A. Shebel, Cara Wallace

JAMA/Archives Media Relations: Jann Ingmire (director); Jim Michalski, Sharon Parmet

PUBLISHING AND BUSINESS STAFF

Group Publisher: Nawin Gupta, PhD

Publishing Operations Division:

Division Director: Vanessa Hayden

Directors: Karen Adams-Taylor, Paul Gasielki

Managers: David Antos, Debbie Camp, Karl Elvin, Betty Frigerio, Mary Ellen Johnston, Mark Matura, Susan Price, Charl Richey, Carmela Ware

Production Associates and Specialists:

Advertising and Production Services: LaWanda Brown, Susan Chiara, Mary Anne Donley, Euwanaha Joiner-Smith, Brian McCartney, Noemi Olmo, Sarah Powell, Denise Steinhauser, Ellen Yoshihara

Composition: Rebecca Aiken, Brenda Chandler-Grayer, Amy Evers, Fred Furtner, Mary Ann Kuranda, Sandra Lopez

Database & New Media: Bruce McGregor (indexer), Clifford O. Barrett, Gail Barrett, Regina Brownlee, Rowena F. Dagang, John Marcinek, La'son Diggs Sledge, Angela Smits

Distribution: Linda Alexander

Graphics: Joe Amft, Carolyn Hall, Maria Kowalkowski, Chris Meyer, JoAnne Weiskopf

Proofreading: Carol Joy Farrell, Daniel James, Judith A. Literskis, Teresa H. Omiotek, Barbara Wojtowicz, Agnes A. Zarkadas

Director, Circulation and Classified Advertising: Curt Reilly

Circulation Processing: Alfred Tomaselli (manager)

Circulation Development: Vida Damijonaitis, Michael McGraw (managers)

Classified Advertising: Thalia Moss (manager) (800) 262-2260; 515 N State St, Chicago, IL 60610

Subscriber Services: (800) 262-2350; fax: (312) 464-5831; e-mail: ama-subs@ama-assn.org

Licensing and Permissions: Norman Frankel, PhD (director); Rhonda Bailey (permissions); fax: (312) 464-5835

National Sales Director: Peter J. Murphy

Advertising Sales Staff: Stuart H. Williams (director)

Eastern: Susan J. Carollo, Nancy E. Souza (representatives); 119 Cherry Hill Rd, Third Floor, Parsippany, NJ 07054, (973) 263-9191

Midwest/Farwest: Jeffery J. Bonistalli (representative); 515 N State St, Chicago, IL 60610, (312) 464-2551

Marketing Services Manager: Kathleen Hiltz

Publishing Manager: Geoffrey A. Flick

AMA EXECUTIVES AND TRUSTEES

Executive Vice President, Chief Executive Officer:

Michael D. Maves, MD, MBA

Senior Vice President, Publishing and Business Services:

Robert A. Musacchio, PhD

President: Yank D. Coble, Jr, MD

President-Elect: Donald J. Palmisano, MD, JD

Immediate Past President: Richard F. Corlin, MD

Speaker, House of Delegates: John A. Knotte, MD

Vice-Speaker, House of Delegates: Nancy H. Nielsen, MD, PhD

Trustees: J. Edward Hill, MD (chair); William G. Pledsted III, MD (chair-elect); Herman I. Abramowitz, MD; John H. Armstrong, MD (young physician); Duane M. Cady, MD; Peter W. Carmel, MD; Ronald M. Davis, MD; Timothy T. Flaherty, MD; Joseph M. Heyman, MD; Robert R. McMillan, MD (public board member); John C. Nelson, MD; Joseph A. Riggs, MD; J. James Rohack, MD; David A. Rosman (student); Peter Y. Watson, MD (resident); Cecil B. Wilson, MD

JOURNAL OVERSIGHT COMMITTEE

Joshua Lederberg, PhD (chair), Christine K. Cassel, MD, David A. Kessler, MD, JD, Robert A. Musacchio, PhD, William M. Passano, Jr, Roy M. Pitkin, MD, Kenneth I. Shine, MD

EDITORIAL BOARD

Daniel M. Albert, MD
University of Wisconsin Hospital
and Clinics
Madison, Wis

Kenneth A. Arndt, MD
Harvard Medical School
Boston, Mass

H. David Banta, MD
The Netherlands Organization
for Applied Scientific Research
Leiden, the Netherlands

Robert J. Blendon, ScD
Harvard University
Boston, Mass

Marjorie A. Bowman, MD, MPA
University of Pennsylvania
Health System
Philadelphia, Pa

Cyril Chantler, MD, FRCP
London, United Kingdom

Joseph T. Coyle, MD
Harvard Medical School
Boston, Mass

James E. Dalen, MD
University of Arizona
College of Medicine
Tucson, Ariz

Pierre Durieux, MD, MPH
Université Paris 6
Paris, France

Ronald G. Evens, MD
Barnes-Jewish Hospital
St Louis, Mo

Michael E. Johns, MD
Robert W. Woodruff
Health Sciences Center
of Emory University
Atlanta, Ga

Colin I. Johnston, MB, BS
University of Melbourne
Melbourne, Australia

Mary-Claire King, PhD
University of Washington
Seattle, Wash

Wayne F. Larrabee, Jr, MD
University of Washington
Seattle, Wash

Joseph K. Lim, MD
Stanford University Medical Center
Stanford, Calif

Donald A. B. Lindberg, MD
National Library of Medicine
Bethesda, Md

Kenneth D. McClatchey, MD, DDS
Loyola University Medical Center
Maywood, Ill

C. David Naylor, MD, DPhil
University of Toronto
Toronto, Ontario, Canada

Claude H. Organ, Jr, MD
University of California—San Francisco,
East Bay
Oakland, Calif

June E. Osborn, MD
Josiah Macy, Jr Foundation
New York, NY

Edmund D. Pellegrino, MD
Georgetown University
Washington, DC

Uwe E. Reinhardt, PhD
Princeton University, Princeton, NJ

Povl Riis, MD, DSCI, DHC
Professor of Medicine
Copenhagen, Denmark

Frederick P. Rivara, MD, MPH
University of Washington
Seattle, Wash

William L. Roper, MD, MPH
University of North Carolina at Chapel Hill
Chapel Hill, NC

Roger N. Rosenberg, MD
University of Texas Southwestern
Medical Center
Dallas, Tex

Masaaki Terada, MD
National Cancer Center
Tokyo, Japan

INTERNATIONAL ADVISORY COMMITTEE

Bassel Atallah, MD, JAMA—Middle East

Mauro Bologna, MD, JAMA—Italy

Csaba Farsang, MD, DSc, JAMA—Hungary

Igor Francetic, MD, PhD, JAMA—Croatia

Evarist Feliu Frasnado, MD, JAMA—Spain

Zbigniew A. Gaciong, MD, PhD, JAMA—Poland

Carla Gikovate, MD, MSc, JAMA—Brazil

Hirosama Ishii, MD, JAMA—Japan

Evin Kantemir, MD, JAMA—Turkey

A. J. Khan, SI, FRCP, JAMA—Pakistan

Li Chengyi, MD, JAMA—China

Guillermo RuizVelasco y A, MD, JAMA—Mexico

Ivan Vidmar, MD, JAMA—Slovenia

Jiří Widimský, MUDr, DrSc, JAMA—Czech/Slovak