



## Cardiomyopathy

Janet M. Torpy; Cassio Lynm; Richard M. Glass

*JAMA*. 2004;292(23):2936 (doi:10.1001/jama.292.23.2936)

Online article and related content  
current as of July 6, 2009.

<http://jama.ama-assn.org/cgi/content/full/292/23/2936>

Supplementary material

Spanish PDF

<http://jama.ama-assn.org/cgi/content/full/292/23/2936/DC1>

Correction

[Contact me if this article is corrected.](#)

Citations

[Contact me when this article is cited.](#)

Topic collections

Cardiovascular System; JAMA Patient Page; Cardiovascular Disease/  
Myocardial Infarction

[Contact me when new articles are published in these topic areas.](#)

Related Articles published in  
the same issue

Implantable Defibrillators for the Prevention of Mortality in Patients With  
Nonischemic Cardiomyopathy: A Meta-analysis of Randomized  
Controlled Trials

[Akshay S. Desai et al. \*JAMA\*. 2004;292\(23\):2874.](#)

Subscribe

<http://jama.com/subscribe>

Email Alerts

<http://jamaarchives.com/alerts>

Permissions

[permissions@ama-assn.org](mailto:permissions@ama-assn.org)

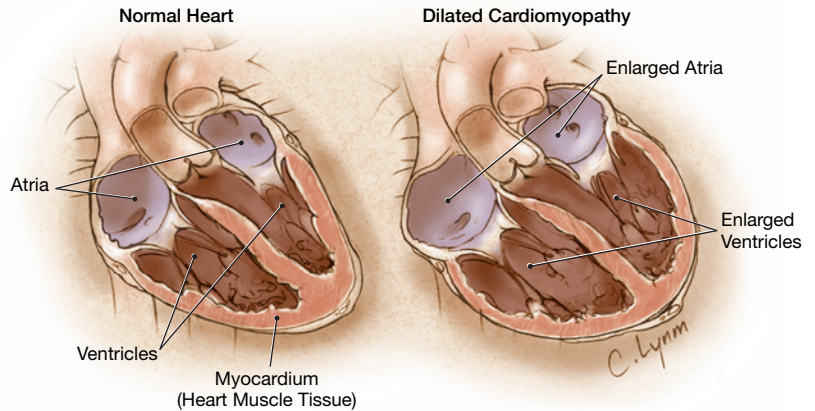
<http://pubs.ama-assn.org/misc/permissions.dtl>

Reprints/E-prints

[reprints@ama-assn.org](mailto:reprints@ama-assn.org)

# Cardiomyopathy

**C**ardiomyopathy, a condition in which the myocardium (heart muscle) does not work properly, can affect children and adults. Unlike heart disease due to heart attacks, where there is a problem with adequate blood flow to the heart, in cardiomyopathy the disease is in the heart muscle itself. The most common type of cardiomyopathy is **dilated cardiomyopathy**—the heart chambers gradually enlarge from ineffective heart muscle contraction. The end result of this is **congestive heart failure**—the heart cannot pump enough blood for the body's organs to function properly. The December 15, 2004, issue of *JAMA* includes an article about cardiomyopathy.



## SIGNS AND SYMPTOMS

- Shortness of breath
- Fatigue
- Chest pain
- Irregular heartbeat
- **Syncope** (fainting) or lightheadedness
- Decreased mental function
- Swelling of the legs and feet or the abdomen

## DIAGNOSIS

In addition to obtaining a complete medical history and performing a physical examination, your doctor may order other tests. Chest x-ray, electrocardiogram, **echocardiogram** (sound waves used to visualize heart structures and blood flow), and **coronary angiography** (injections into the coronary arteries to visualize them) are tests used to evaluate persons with congestive heart failure and cardiomyopathy. In some cases, a **biopsy** (small sample) of the heart muscle may be needed.

## TREATMENT

Diet and lifestyle changes, including sodium restriction and regular exercise, are the first line of treatment for persons with cardiomyopathy. Several types of prescription medications may be used. Heart pacemakers and implantable **defibrillators** (devices to shock the heart out of an abnormal rhythm) may be necessary for persons with irregular heartbeat due to cardiomyopathy. In severe cases, heart transplantation may be considered for persons who have not responded to other treatments or whose heart function is severely diminished and is not expected to improve with maximal medical treatment.

Sources: National Heart, Lung, and Blood Institute; American Heart Association; American College of Cardiology

## FOR MORE INFORMATION

- American Heart Association  
800/242-8721  
[www.americanheart.org](http://www.americanheart.org)
- National Heart, Lung, and Blood Institute  
301/496-4236  
[www.nhlbi.nih.gov](http://www.nhlbi.nih.gov)
- American College of Cardiology  
800/253-4636  
[www.acc.org](http://www.acc.org)

## INFORM YOURSELF

To find this and previous JAMA Patient Pages, go to the Patient Page link on JAMA's Web site at [www.jama.com](http://www.jama.com). A Patient Page on heart failure was published in the February 6, 2002, issue; one on left ventricular hypertrophy was published in the November 17, 2004, issue; one on risk factors for heart disease was published in the August 20, 2003, issue; and one on hypertension was published in the February 27, 2002, issue.

Janet M. Torpy, MD, Writer  
Cassio Lynn, MA, Illustrator  
Richard M. Glass, MD, Editor

The JAMA Patient Page is a public service of JAMA. The information and recommendations appearing on this page are appropriate in most instances, but they are not a substitute for medical diagnosis. For specific information concerning your personal medical condition, JAMA suggests that you consult your physician. This page may be photocopied noncommercially by physicians and other health care professionals to share with patients. Any other print or online reproduction is subject to AMA approval. To purchase bulk reprints, call 718/946-7424.

